

Water Expressions Mayan Falls Instructions

Thank you for purchasing a Water Expressions fountain. We are confident that this fountain will bring many years of viewing and listening pleasure.

Important Facts:

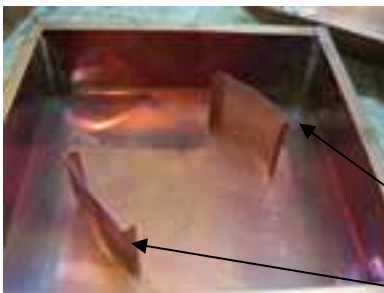
- Pump is secure to copper tube; **no** assembly or adjustment is required. If pump volume is to be increased / decreased simple adjust by moving green control on pump.
- Do not use copper cleaner, will adversely affect finish. Pledge or similar product is recommended. Fountain must be routinely cleaned and wiped down.
- Clean panels of any dust and/or shipping debris prior to pouring water into base.
- Fill base with water no higher the ½” from top.
- Distilled water is recommended to avoid mineral and calcium build-up.
 - * If you choose not to follow Water Expressions’ recommendation, to use only distilled water, adding bottled spring water may be a better choice then tap hard water.
- Water additives often contain color dies that can stain slate, check with your local garden center for recommendation conducive to your geographical area.
- Choose a display location that is most conducive to a water fountain. Water Expressions _____works diligently at developing fountains that reduce the amount of splashing.
However, always exercise caution when operating this fountain in areas more susceptible to water damage.

Tools Required: Level.

Fountain Set-up:

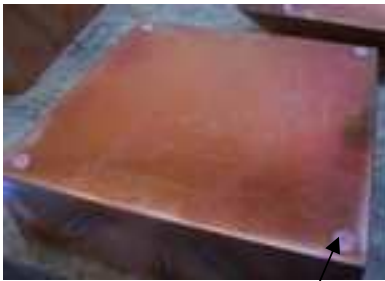
1. Un-pack all components carefully removing the copper structure from box. Remove all cardboard packing items and discard. Place all fountain components on table for assembly. Carefully remove slate from protective cavities.
2. Apply rubber cushions (bottom) to all four corners of copper base (see diagram-A)

Note: All Slate is unique in thickness, therefore, Copper Leveling inserts maybe required. If after placing slate, you notice that it is not level place square copper shims on slate support and/or slate itself. Repeat as needed. Copper leveling inserts may also be used on slate panels.



Place copper supporter on each side of copper base.

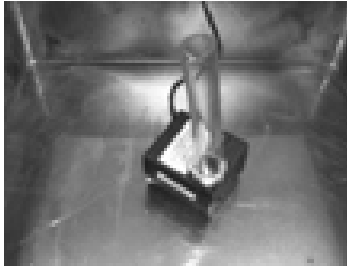
Diagram - A



Error!

Apply Rubber bumpers to bottom of base, each corner.

Step – 3



Place pump assembly in base.

Step – 4



Place largest plate through hose.

Step - 5



Level as needed.

Step – 6



Place slate spacers as shown. Repeat.
Place rocks onto slate.

Step – 7. Add second and third panels with slate spacers between.



Fill pan with water not more than ½” from top of base, (distilled).
top.

Water level should be maintained at ½” below the

11. Plug in fountain and enjoy.

Maintaining your Fountain

- Always run fountain at recommended water level. Pump must always be submerged in water; not doing so will result in pump damage. If you hear pump, may need to replenish water level. After plugging in pump no water appears, unplug from out-let and re-plug. Do several times if needed.
- Do not use Copper Cleaner, will remove patina finish.

If you have any questions please contact Water Expressions directly at: 1-877-803-3404

Notice: Water Expressions designed your water fountain not to splash; however, condensation and/or splashing may occur if set-up is incorrect. Please use precautions and protect sensitive surfaces supporting your fountain.